



The Gallery Collection | roller shade fabrics

- Sivoia QED®
- Sivoia® QS
- Sivoia® QS Wireless



# The Gallery Collection by Lutron®

“Style is the perfection of a point of view.”

Richard Eberhart

## Style meets technology

Lutron® has expanded its designer fabric line combining style with precision control of daylight. The Gallery Collection includes a range of color, texture, and pattern to accent any décor.

The collection provides beautiful fabrics within the sheer and dim-out categories, including shimmering metallics and ultra-suede neutrals. Enjoy the performance of Lutron shades with the beauty of The Gallery Collection. Relax knowing that this collection contains sustainable fabric options.

Reflect your lifestyle and control daylight with shades that are a work of art.

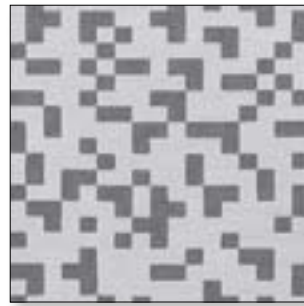
Front cover:  
Roller 20™ Sivoia® QS Wireless dual shades  
Left: **Nest - White** and **Singing in the Rain - Plum**  
Center: **Boxstitch - New Wave** and **Basketweave - White**  
Right: **Kago - Silver** and **Singing in the Rain - Indigo**



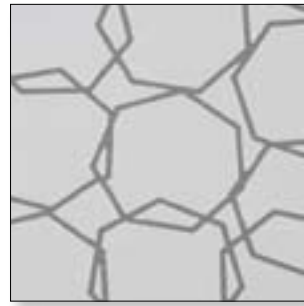
Add mystery and drama with sculpted sheers that both obscure and reveal. Fiber-etching removes part of the fabric to create the design. Select from a collection of patterns that range from whimsical to geometric. Each sculpted sheer diffuses light in a distinctive way.



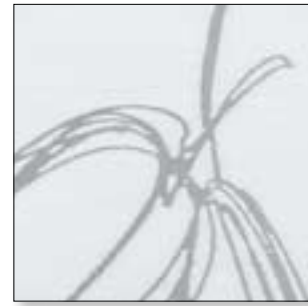
Snow Drops - Beige (wrapped bronze bottom bar) with dim-out fabric Singing in the Rain - Pumpkin



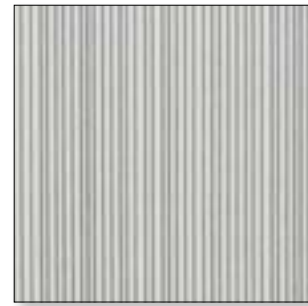
Pixel R - White  
BO-PIX-WH  
- PVC-Free  
- Oeko-Tex® Standard  
100 Certified



Vector R - White  
BO-VEC-WH  
- PVC-Free  
- Oeko-Tex® Standard  
100 Certified



Thin Line Floral - White  
BO-TLF-WH  
- PVC-Free



Fine Vertical - White  
BO-FV-WH  
- PVC-Free  
- Oeko-Tex® Standard  
100 Certified



Nuage - Opal  
S-NUAG-OPL  
- PVC-Free



Nuage - Crème  
S-NUAG-CRM  
- PVC-Free



Nuage - Champagne  
S-NUAG-CP  
- PVC-Free



Nuage - Glass  
S-NUAG-GLS  
- PVC-Free



Fine Vertical - Ivory  
BO-FV-IV  
- PVC-Free  
- Oeko-Tex® Standard  
100 Certified



Fine Vertical - Black  
BO-FV-BL  
- PVC-Free  
- Oeko-Tex® Standard  
100 Certified



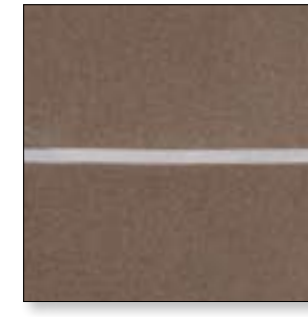
Bali - White  
BO-BAL-WH



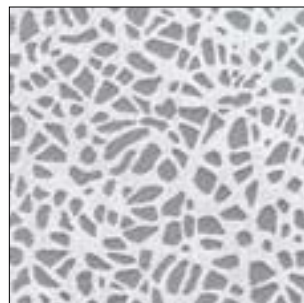
Bali - Black  
BO-BAL-BL



Nuage - Karat  
S-NUPG-KRT  
- PVC-Free



Nuage - Fog  
S-NUAG-FOG  
- PVC-Free



Nest - White  
BO-NST-WH  
- PVC-Free



Nest - Beige  
BO-NST-BE  
- PVC-Free



Snow Drops - Ivory  
BO-SWD-IV  
- PVC-Free



Snow Drops - Beige  
BO-SWD-BE  
- PVC-Free

Fabric	Usable Roll Width	Composition	Openness Factor (%)
Pixel R	76 in (1930 mm)	100% Trevira CS	>20
Vector R	76 in (1930 mm)	100% Trevira CS	6
Thin Line Floral	77 in (1956 mm)	55% Polyester, 45% Viscose	3
Fine Vertical	77 in (1956 mm)	100% Polyester	>20
Bali	84 in (2134 mm)	100% Polyester	6 WH, 4 BL
Nest	77 in (1956 mm)	73% Cotton, 27% Polyester	>25
Snow Drops	77 in (1956 mm)	73% Cotton, 27% Polyester	>15
Nuage	116 in (2997 mm)	100% Trevira CS	5

Refer to page 22 for all fabric rules.



Create warmth with texture. Whether simple or complex weaves, these fabrics lend an air of sophistication to your environment. Choose from rich grains or from neutral hues to complement your space.



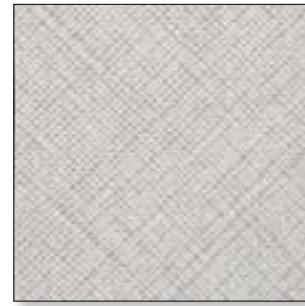
Bali - Linen  
(wrapped bronze bottom bar)



Scratch - White  
T-SCR-WH  
- PVC-Free  
- Oeko-Tex® Standard  
100 Certified



Scratch - Beige  
T-SCR-BE  
- PVC-Free  
- Oeko-Tex® Standard  
100 Certified



Crosshatch - White  
T-CHT-WH  
- PVC-Free  
- Oeko-Tex® Standard  
100 Certified



Crosshatch - Natural  
T-CHT-NT  
- PVC-Free  
- Oeko-Tex® Standard  
100 Certified



Clew - Parchment  
T-CLEW-PCH  
- PVC-Free



Clew - Tatami  
T-CLEW-TAT  
- PVC-Free



Clew - Husk  
T-CLEW-HSK  
- PVC-Free



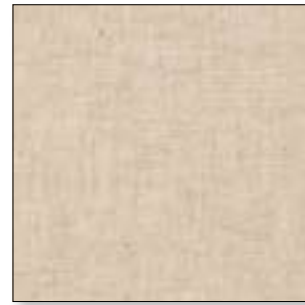
Clew - Ravani  
T-CLEW-RAV  
- PVC-Free



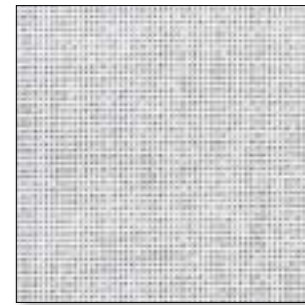
Bali - Linen  
T-BAL-LN



Light Linen - Natural  
T-LLN-NL  
- PVC-Free



Plain Linen - Dark  
T-PLN-DL  
- PVC-Free



Basketweave - White  
T-BKW-WH  
- PVC-Free



Clew - Flax  
T-CLEW-FX  
- PVC-Free



Basketweave - Linen  
T-BKW-LN  
- PVC-Free



3 Weaves - White  
T-3WV-WH  
- PVC-Free



3 Weaves - Linen  
T-3WV-LN  
- PVC-Free



Burlap - Brown  
T-BUR-BR  
- PVC-Free

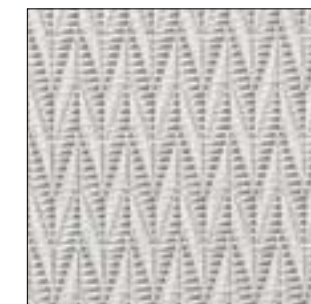
Fabric	Usable Roll Width	Composition	Openness Factor (%)
Scratch	77 in (1956 mm)	100% Polyester	20 WH, 1 BE
Crosshatch	77 in (1956 mm)	100% Polyester	9 WH, 1 NT
Bali	84 in (2134 mm)	94% Polyester, 6% Flax	5
Light Linen	77 in (1956 mm)	94% Polyester, 6% Flax	1
Plain Linen	77 in (1956 mm)	60% Cotton, 40% Flax	3
Basketweave	85 in (2159 mm)	90% Cotton, 10% Flax	9 WH, >10 LN
3 Weaves	77 in (1956 mm)	90% Cotton, 10% Flax	6
Burlap	77 in (1956 mm)	100% Polyester	9
Clew	64 in (1676 mm)	100% Trevira CS	2

Refer to page 22 for all fabric rules.

sheer | metallic

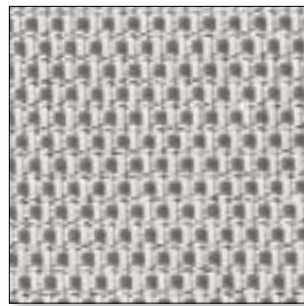


Coordinate finishes in a room with woven metallic accents. These luminescent sheers offer a contemporary look and diffuse light with a hint of shimmer.

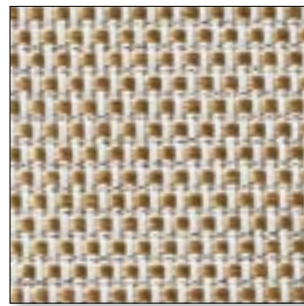


Sugi - Silver  
(exposed anodized aluminum bottom bar)

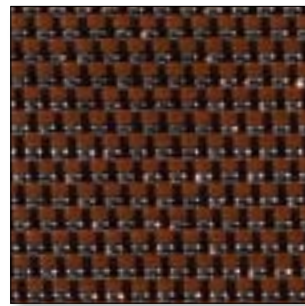
sheer | metallic



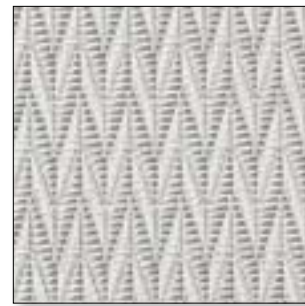
Kago - Silver  
M-KAGO-SLV



Kago - Gold  
M-KAGO-GD



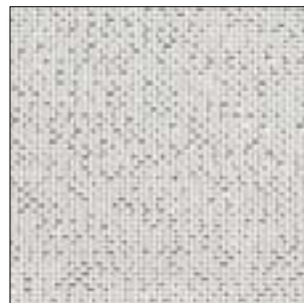
Kago - Copper  
M-KAGO-CPP



Sugi - Silver  
M-SUGI-SLV



Sugi - Gold  
M-SUGI-GD



Plains - Winter Ice  
M-PLN-SLV



Plains - Golden Dawn  
M-PLN-GD



Plains - Copper Twilight  
M-PLN-CPP

Fabric	Usable Roll Width	Composition	Openness Factor (%)
Kago	70 in (1829 mm)	25% polyester, 73% vinyl, 2% nylon	12
Sugi	70 in (1829 mm)	24% polyester, 76% vinyl	7
Plains	70 in (1829 mm)	25% polyester, 72% vinyl, 3% nylon	7

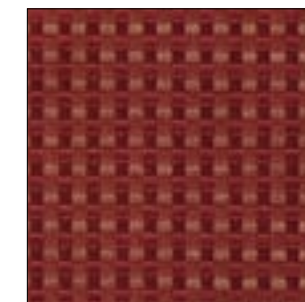
Refer to page 22 for all fabric rules.



dim-out | translucent

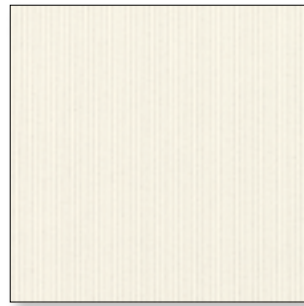


Showcase the interplay of light and shadow with a translucent fabric, providing moderate light control with privacy. Select from a saturated palette of fabrics with recycled content to make a bold statement in any room.

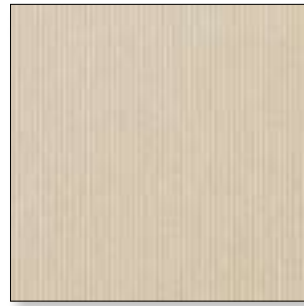


Boxstitch - Hot Red  
(wrapped bottom bar)

dim-out | translucent



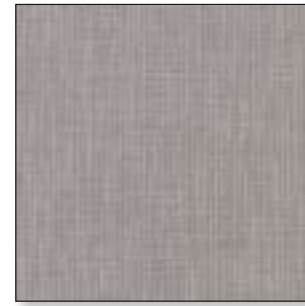
Singing in the Rain  
White  
P-101-WH  
- PVC-Free  
- 100% Recycled



Singing in the Rain  
Flax Seed  
P-103-FS  
- PVC-Free  
- 100% Recycled



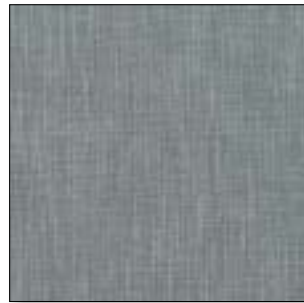
Singing in the Rain  
Khaki  
P-105-KK  
- PVC-Free  
- 100% Recycled



Singing in the Rain  
Nickel  
P-802-NK  
- PVC-Free  
- 100% Recycled



Singing in the Rain  
Moss  
P-503-MO  
- PVC-Free  
- 100% Recycled



Singing in the Rain  
Dusk  
P-401-DK  
- PVC-Free  
- 100% Recycled



Singing in the Rain  
Port  
P-301-PT  
- PVC-Free  
- 100% Recycled



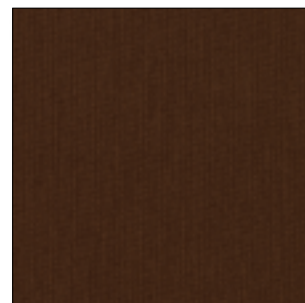
Singing in the Rain  
Pumpkin  
P-701-PP  
- PVC-Free  
- 100% Recycled



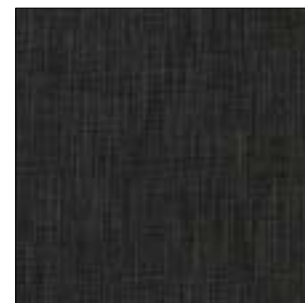
Singing in the Rain  
Indigo  
P-402-IG  
- PVC-Free  
- 100% Recycled



Singing in the Rain  
Raisin  
P-601-RN  
- PVC-Free  
- 100% Recycled



Singing in the Rain  
Mocha  
P-104-MC  
- PVC-Free  
- 100% Recycled



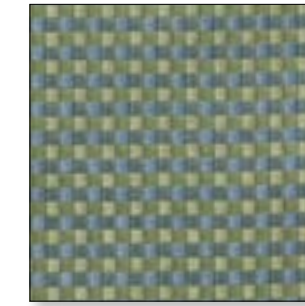
Singing in the Rain  
Charcoal  
P-804-CH  
- PVC-Free  
- 100% Recycled



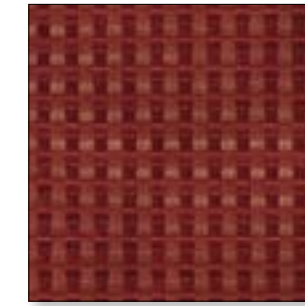
Boxstitch - Cane  
TR-BXST-CN  
- PVC-Free  
- 96% Recycled



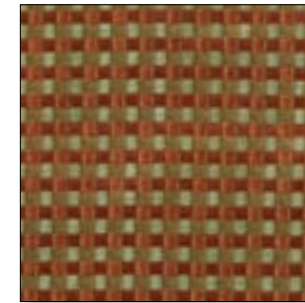
Boxstitch - Tea Bag  
TR-BXST-TB  
- PVC-Free  
- 96% Recycled



Boxstitch - New Wave  
TR-BXST-NW  
- PVC-Free  
- 96% Recycled



Boxstitch - Hot Red  
TR-BXST-HR  
- PVC-Free  
- 96% Recycled



Boxstitch - Curry  
TR-BXST-CU  
- PVC-Free  
- 96% Recycled



Boxstitch - Mohegan  
TR-BXST-MG  
- PVC-Free  
- 96% Recycled

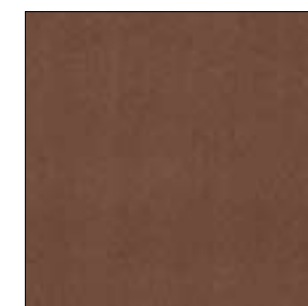
Fabric	Usable Roll Width	Composition	Openness Factor (%)
Singing in the Rain	68 in (1727 mm)	100% Recycled Polyester	<2
Boxstitch	70 in (1829 mm)	72% recycled polyester 24% post-consumer recycled polyester 4% flame retardant polyester	1

Refer to page 22 for all fabric rules.

dim-out | privacy



Create privacy and block light with an ultra-suede fabric. The neutral palette can coordinate with any space, while adding elegance.

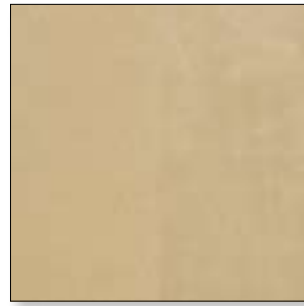


Montana - Saddle  
(exposed bronze bottom bar)

dim-out | privacy



Montana - Prairie  
P-PRA  
- PVC-Free



Montana - Moccasin  
P-MOC  
- PVC-Free



Montana - Buffalo  
P-BUF  
- PVC-Free



Montana - Saddle  
P-SAD  
- PVC-Free

Fabric	Usable Roll Width	Composition	Openness Factor (%)
Montana	86 in (2184 mm)	100% Polyester	<1

Refer to page 22 for all fabric rules.



## Fabric rules

### Maximum heights/widths

Fabric maximum height and width limits are 156 in. (3962 mm) with the exception of Singing in the Rain, which has maximum limits of 120 in. (3048 mm).

### Bottom bar options

This collection can only use architectural bottom bars. Architectural bottom bars are available as exposed (pgs 10, 18 and 21) or wrapped (pgs 2, 6, and 14). Bottom bar colors: White, Anodized Aluminum and Bronze. Endcaps coordinate with the selected fabric.

### Solar properties

A complete listing of solar performance metrics is available at [www.lutron.com/fabrics](http://www.lutron.com/fabrics)

### Fire ratings

Basketweave, Boxstitch, Clew, Kago, Montana, Nuage, Pixel R, Plains, Sugi and Vector R fabrics are fire retardant according to US Standard NFPA 701. All others are not currently rated.

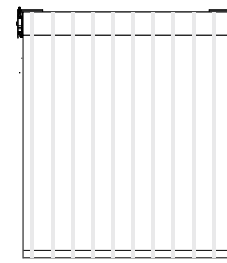
### Lead time

All fabrics in The Gallery Collection have a Premium stocking level. Completed shades are manufactured and available for shipment within 20 business days of order receipt.

### Railroading

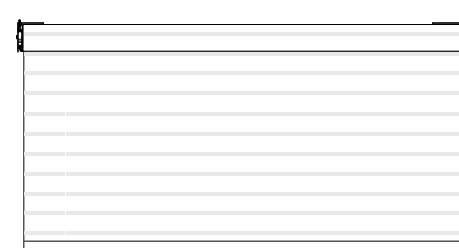
Railroading fabric is an option for applications that require shades wider than the usable roll width. Railroading rotates the fabric 90 degrees from its typical orientation. Please note If the fabric has a distinct pattern, this pattern will be rotated 90 degrees, thereby altering the final appearance of the shade. Boxstitch, Clew, Kago, Nuage, Plains, and Sugi cannot be railroaded.

### Standard fabric orientation



For applications narrower than the usable roll width

### Railroaded fabric orientation



For applications wider than the usable roll width

### Seaming

Montana is the only fabric in the collection that can be seamed.

## Lutron® technology

The technology behind the experience is the Sivoia® Quiet Electronic Drive. Hidden inside each shade roller tube is a patented intelligent drive, offering a number of features that translate to ease of operation, reliability, and elegance.

### Features:

- Ultra-quiet operation (less than 44dBA at 3 ft.)
- Symmetrical light gaps
- Intelligent bottom bar alignment
- 8-year warranty

Lutron roller shades can be controlled by the following systems:

- Sivoia QED®
- Sivoia® QS
- Sivoia QS Wireless

Refer to [www.lutron.com/shadingsolutions](http://www.lutron.com/shadingsolutions) to learn more.



## Resources

The following resources are available in the SCT or by contacting Customer Service at 1.888.LUTRON1:

- 8 in. x 10 in. memo samples – all requests will be processed within 48 to 72 hours
- Larger fabric samples
- A fabric binder (**P/N GALLERY-BNDR-SET**)

Additional resources available online at [www.lutron.com/shadingsolutions](http://www.lutron.com/shadingsolutions):

- A quick reference matrix
- Sustainable fabric guide
- How to specify
- Other fabric collections



fabric binder and cards



fabric memo samples

### PVC-free

Polyvinyl Chloride (PVC) is used in many fabrics to make them more durable. The additives in PVC off-gas and create the familiar “new car” smell when a shade is first installed. PVC-free fabrics do not contain these additives and as a result, do not release this scent.

### Recycled content

Recycled products are made in part or whole from materials which contain either reused, remanufactured, or reconditioned material, and includes recycled raw materials. Recycled fabrics reduce the amount of waste entering landfills and decrease the need for virgin materials.



### Oeko-Tex® Standard 100 Certification

The Oeko-Tex® Association is an independent organization that tests and certifies fabrics to be free of harmful concentrations of chemicals. These substances must be non-existent or at trace levels in order to receive this certification.

Items marked with this label have been certified as being good for personal well-being. Certification must be renewed every twelve months to ensure continual compliance with testing standards.

For more information on Oeko-Tex testing standards, please visit their website: [www.oeko-tex.org](http://www.oeko-tex.org)

Note: The Oeko-Tex Standard 100 Certification shown above has been issued to Almedahls for Scratch, Crosshatch, and Fine Vertical fabrics.



At Lutron, our belief in innovation has made us the world leader in light control. We believe that when a company’s products are best in class, and when a company is a leader in the industry, quality, technology, and market leadership follow.

Lutron pioneered the invention of the first solid-state dimmer in 1961 and the invention of the first ultra-quiet precision-controlled roller shade in 2000. Our innovative approach to design and commitment to pushing the boundaries of convention have made Lutron the first choice for the finest residences and buildings in the world.

Lutron lighting controls are present on projects around the globe, from the spectacular St. Paul’s Cathedral in England to the incredible Beijing headquarters of the Bank of China.

Lutron holds over 250 patents and manufactures more than 15,000 products. For over 40 years, Lutron has exceeded the highest standards of quality and service. Every one of our products is quality-tested before it leaves the factory to ensure the highest level of reliability.

Our belief in delivering value to the customer is what has kept us strong. Lutron thrives because it delivers regional, specialized service on a global scale and engineers solutions to meet the unique needs of each customer.

With a full line of shading solutions, Lutron has opened a new world of possibilities by seamlessly integrating electric and daylight control with a focus on innovation, world-class engineering, and customer service. Lutron blends technology with design and environmental sensitivity to provide the ideal solution for total light control.



The White House, Washington, D.C.



private residence, France



Bank of China, Beijing

Lutron® has been the world's leading manufacturer of lighting controls and systems for over 45 years. With the addition of shading solutions, Lutron has opened a new world of possibilities by seamlessly integrating electric and daylight control with a focus on innovation, world-class engineering, and customer service. Lutron blends technology with design and environmental sensitivity to provide the ideal solution for total light control.

[www.lutron.com/shadingsolutions](http://www.lutron.com/shadingsolutions)

Lutron Electronics Co., Inc.  
7200 Suter Road  
Coopersburg, PA 18036-1299

World Headquarters 1.610.282.3800  
Technical Support Center 1.800.523.9466  
Customer Service/Quotes 1.888.LUTRON1  
Email: [shadinginfo@lutron.com](mailto:shadinginfo@lutron.com)

© 08/2009 Lutron Electronics Co., Inc.  
P/N 367-1528 REV C

