

Portable Document Camera

AVerVision CP300

Multifaceted Focus





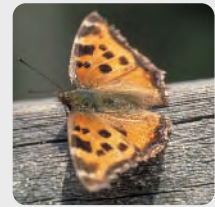
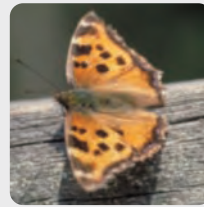
All in One

AVerVision CP300 is a mighty teaching tool featuring 3.2 Mega pixel camera, exclusive 2X AVerZoom and 8X digital zoom that jointly provide a 16X total zoom and pan capability, and instant Auto Focus that delivers utmost clarity of image in a second with one touch. The WXGA 1280x720 output resolution is added to support your facility upgrade and make presentation more entertaining. The Patented Laser Positioning Guide projected from the camera down to a table enables users to easily place and locate documents or objects in the correct viewing area. CP300 retains all new functions applied on the CP series and provides exclusive features such as Picture-in-Picture (PIP) and Split Screen for viewing live and captured images simultaneously. The exceptional AVerPresenter are embedded for teachers to highlight or hide a portion of an image or text. Whether displaying documents, 3D objects or physical demonstrations, the AVerVision CP300 facilitates you to communicate presentation effectively in an interactive environment.



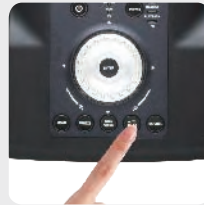
Sharp Auto Focus

Students' attentions are easily lost if any interruption occurs, situations include wasting time to fine tune an image out of focus. The AVerVision CP300's Auto Focus function can ease teacher's frustration with the convenience of one touch button for accurate focal adjustment to the subject presented in class.



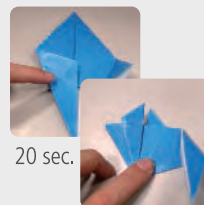
Quick Auto Image

The Auto Image capability offers instantaneous automatic adjustments for white balance and exposure of the image displayed on the document camera when the LED lamp is turned on or off.



Powerful Continuous Capture

The powerful Continuous Capture function enables you to set time intervals to capture and record images continuously. Teachers can relate back to the saved images and share with students in a presentation.



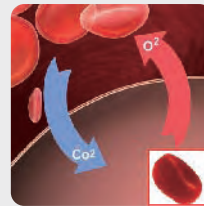
40 sec.



60 sec.

Rich Add-ons

The CP300 is loaded with valuable features such as the Split Screen and Picture-in-Picture (PIP) which offers the benefit of comparing real live demonstration and still images to analyze and understand the relationship between two objects simultaneously.



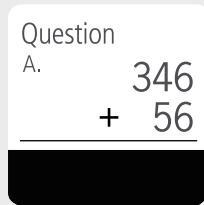
PIP



Split Screen

Effective AVerPresenter

AVerPresenter can either highlight a particular portion when darkening the remaining area (AVerVisor), or emphasize an area with a colored frame box subject on the document (AVerBox) to focus students' attentions.



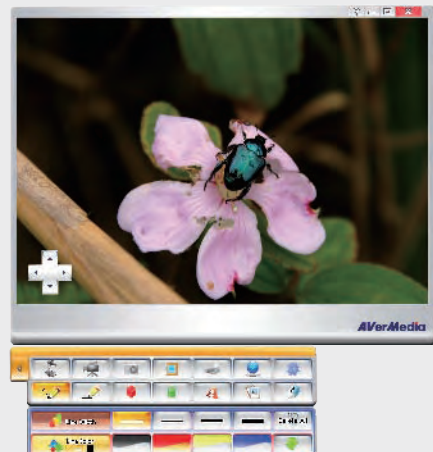
AVerVisor



AVerBox

Friendlier Software

The newly bundled AVerVision software is revamped for easier control in collaborating with interactive whiteboard during a classroom presentation. The USB transmission rate is enhanced up to 12fps, which significantly reduces image blur or distortion when using Annotation feature to add notes, overlay text, create drawings, and highlight important details. In addition, the Networking feature provides the access for teachers to remotely control document cameras in the local area network (LAN) to facilitate cross-classroom discussion and sharing. Combining with the Continuous Capture function in a remote experiment observation, users can continuously capture observation images in preferred time intervals (from 5 sec. to 600 sec.) and save directly to a PC or MAC. Teachers can enlarge students' learning while applying our user friendly software in a presentation.





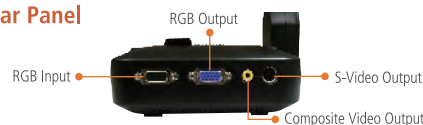
AVerVision CP300

Product Specifications

Image Sensor	1/2" CMOS
Total Pixels	3.2M Pixels
Output Resolution	WXGA (1280 x 720)
Lens	f1 = 9.6mm
Zoom	16X Total Zoom (2X AVerZoom™+ 8X Digital Zoom)
Frame Rate	24fps (Max.)
Focus	Auto/ Manual
Shooting Area	A4 Landscape
Image Rotation	Camera Head 0°/ 90°/-90°
Image Storage	Built-in Memory (Max: 80)
On-Screen Display (OSD)	Provided
Image Effect	Color/ B/W/ Negative/ Mirror/ Reverse/ Freeze
Image Adjust. (White Balance/Exposure/Night View)	Auto/ Manual
AVerPresenter	Provided (AVerVisor and AVerBox)
Split Screen	Provided (Vertical & Horizontal)
Picture-in-Picture	Provided
Display Mode	Text/ Graphics/ High Frame
Capture Mode	Single/Continuous
Profile	Provided
Timer	Provided
Flicker Filter Control	2 Levels
Remote Control	Provided (With Laser Pointer)
DV-H Output	Provided
VGA Input/Output	Provided (15-Pins D-sub, Pass Through)
S-Video, Composite Video Output	Provided (NTSC or PAL)
RS-232 Port	Provided (With S-Video/RS-232 Adapter Cable)
USB 2.0 Port	Provided (USB Camera/ Built-in Image Download)
Light Source	Embedded LED Lamp
Laser Positioning Guide	Provided
Dimension	Operating: 160mm x 170mm x 450mm Folded: 287.4mm x 232.5mm x 61mm
Net Weight	2.4kg (5.31lbs)
Power Source	AC/DC 100-240V ~ 4A~4.2A, 50-60 Hz
Warranty	3 Year Limited Parts and Labor**
Certifications	FCC, CE



Rear Panel



Right Panel



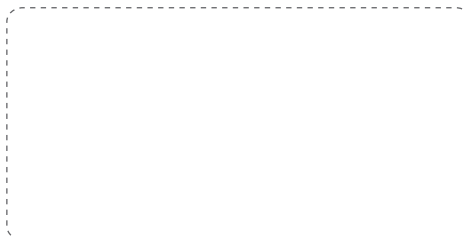
Left Panel



Optional Accessories



Distributor / Dealer :



Compatible Operating System

Windows®	2000 (SP4), XP (SP2), Vista (32-bit or 64-bit)
Macintosh®	OS 10.3 (Panther), OS 10.4 (Tiger), OS 10.5 (Leopard)

Package Content

AVerVision CP300	S-Video/RS-232 Adapter Cable
Power Adapter & Cord	AVerVision Software CD
VGA Cable	Anti-Glare Sheet
S-Video Cable	Warranty Card
USB Cable	Remote Control with Batteries
RCA Cable	Carrying Bag
User Manual	

* Please refer to warranty card

